

# ArchiCAD User Guide

Bondor Metecno products; BIM Content



**Contact Us:**  
[www.bondor.com.au](http://www.bondor.com.au)  
1300 300 099

**BONDOR®** *metecno®*

## Table of Contents

<b>Introduction .....</b>	<b>2</b>
<b>Download content .....</b>	<b>2</b>
Bondor Metecno Display Suite.pln .....	2
Bondor Metecno Classifications and Properties.xml .....	2
Bondor Metecno Attributes.xml .....	2
Bondor Metecno Properties Component Schedule.xml .....	2
Bondor Metecno product BIM content for Archicad Users   User guide.PDF .....	2
<b>Content import into Archicad .....</b>	<b>3</b>
Bondor Metecno Classifications and Properties.xml .....	3
Bondor Metecno Attributes.xml .....	5
Bondor Metecno Properties Component Schedule.xml .....	8
<b>Modelling process in Archicad .....</b>	<b>10</b>
<b>Additional Considerations .....</b>	<b>12</b>
Vectorial Hatching in Elevations / Sections .....	12
Index Numbers .....	12
Pens.....	12
Modelling using Composites not Building Materials .....	12

## Introduction

The Bondor Metecno product BIM content for Archicad users provides Archicad users access to geometrical and alphanumerical information for their current product range. The following guide outlines the process for importing and using the content in your projects.

The content has been created in Archicad 26, therefore it is only suitable for use in Archicad 26 and later.

## Download content

The .ZIP file downloaded will include the following files.

- Bondor Metecno Display Suite.pln
- Bondor Metecno Classifications and Properties.xml
- Bondor Metecno Attributes.xml
- Bondor Metecno Properties Component Schedule.xml
- Bondor Metecno product BIM content for Archicad Users | User guide.PDF

### Bondor Metecno Display Suite.pln

This Archicad file provides a visual display of the whole Bondor Metecno product range in plan and 3D. You can navigate this file to find the products you want to include in your project model in Archicad.

### Bondor Metecno Classifications and Properties.xml

This XML file is required to be imported into your Archicad file / template prior to importing the Attribute and Component Schedule xml files. This file facilitates the properties attached to each of the Building Materials in the Bondor Metecno range. If it is not loaded, or if it is loaded after the other xml files, no product information will be attached to elements in your model.

### Bondor Metecno Attributes.xml

This XML file contains and cover fills, surfaces, building materials and composites that facilitate the geometrical, graphical, and alphanumerical information to be correctly displayed in your project model in Archicad. This file should only be imported into your Archicad file / template after the Bondor Metecno Classifications and Properties.xml file is imported.

### Bondor Metecno Properties Component Schedule.xml

This XML file contains the Component Interactive Schedule that you can use to schedule all the product properties for the Bondor products included in your model.

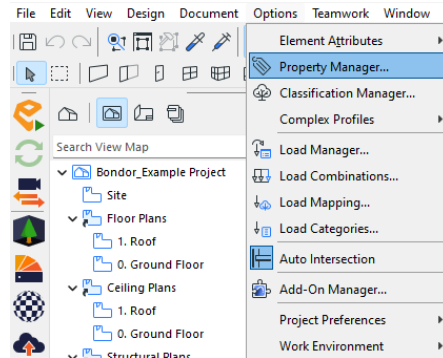
### Bondor Metecno product BIM content for Archicad Users | User guide.PDF

This document will assist you to import the Bondor Metecno product range into Archicad, and how to achieve the correct graphical display in your file.

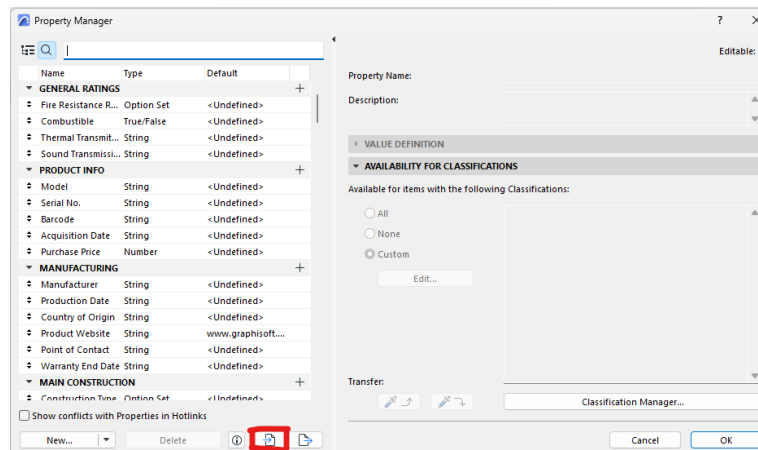
# Content import into ArchiCAD

## Bondor Metecno Classifications and Properties.xml

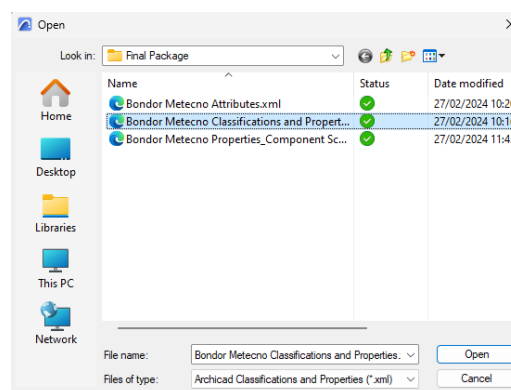
1. To import the Properties and Classification into your Archicad file / template you need to first click on the options menu and select Property Manager...



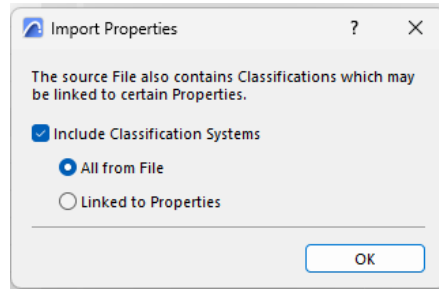
2. In the Property manager dialogue, you need to click on the import button at the bottom of the pop up.



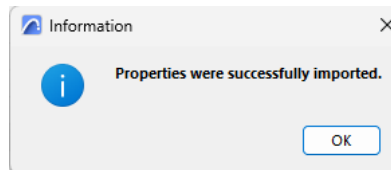
3. Select the Bondor Metecno Classifications and Properties.xml file and click Open.



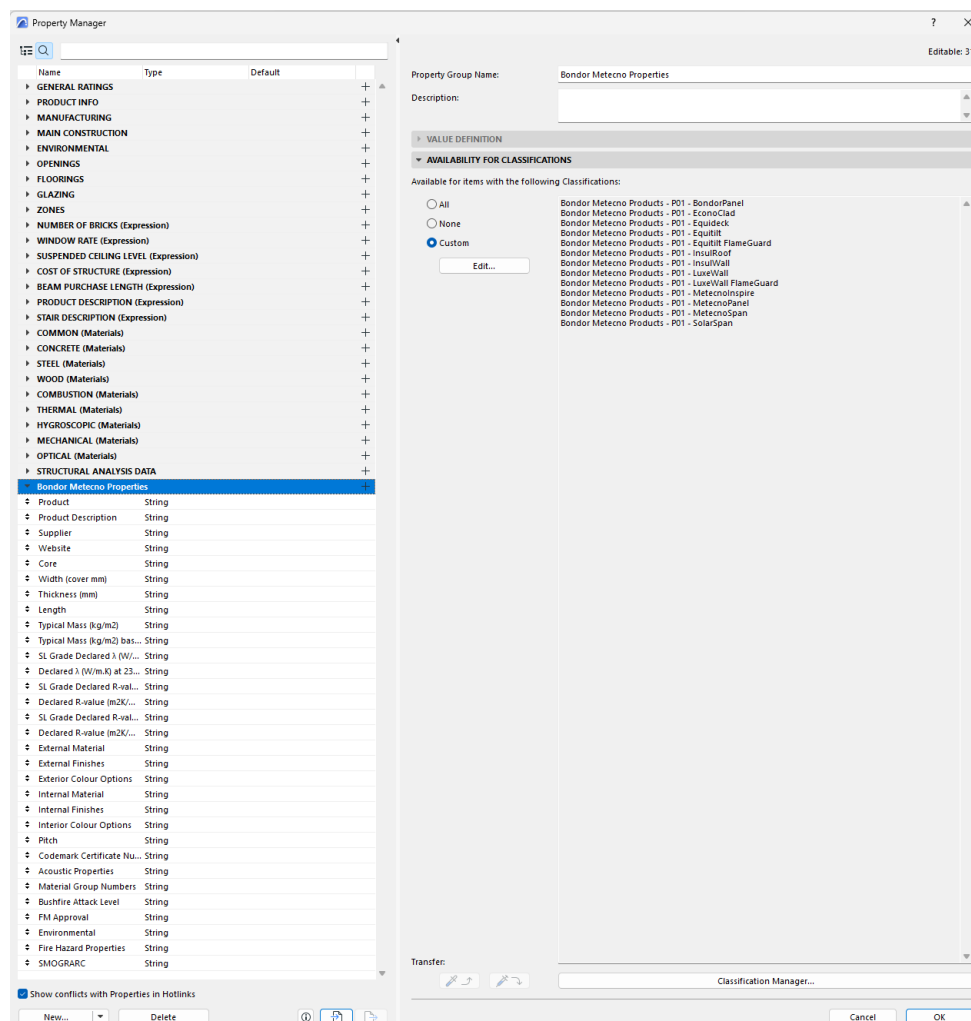
- The Import Properties dialogue box will then pop up, check the Include Classification Systems button, and the All from File button, then click Ok.



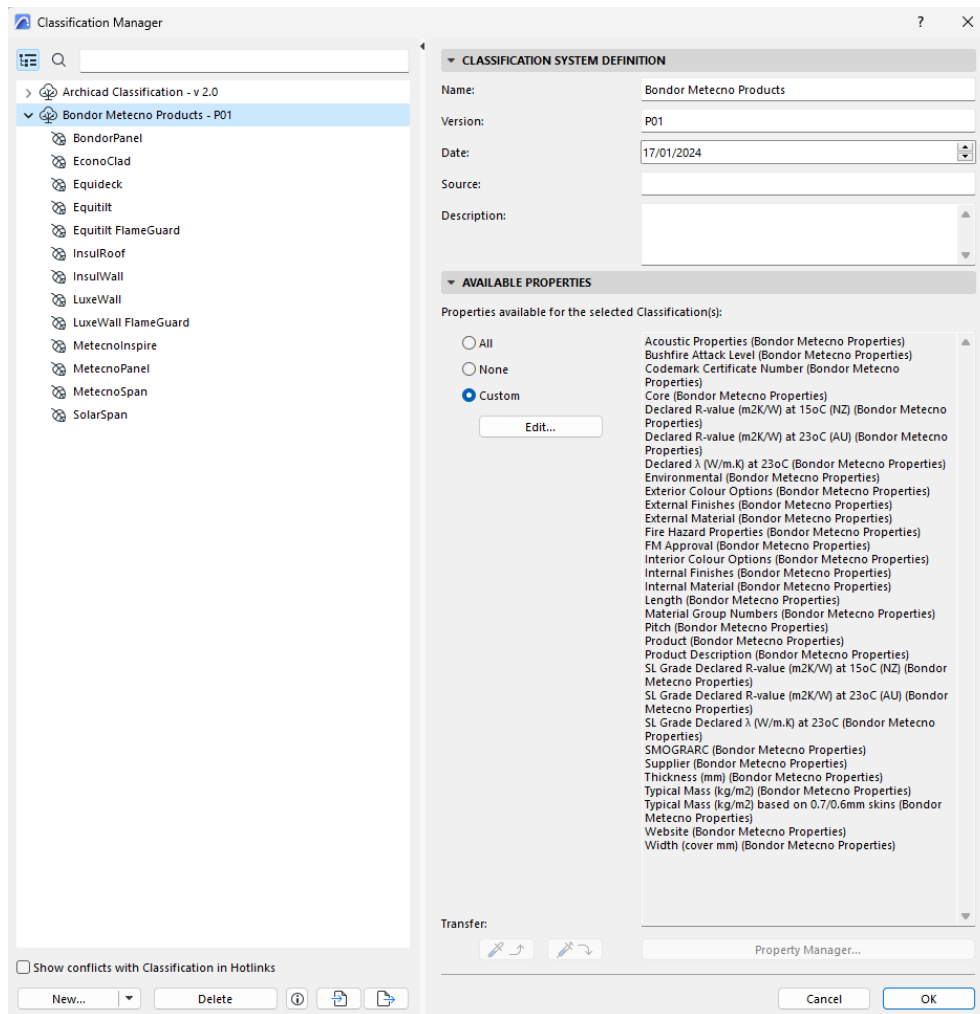
- The Information dialog box will then pop up, click Ok.



- Once imported, you will be able to scroll to the bottom of the Archicad Properties list and see that the Bondor Metecno properties are now imported into your Archicad file. To finalise the import process, click Ok in the bottom right corner of the dialog box.

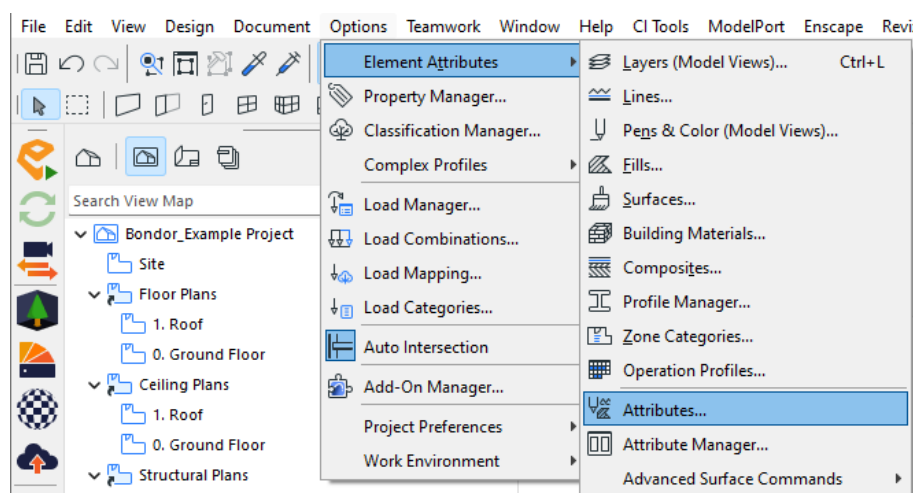


- You can also check the Archicad Classifications are imported by going into the Classification Manager.

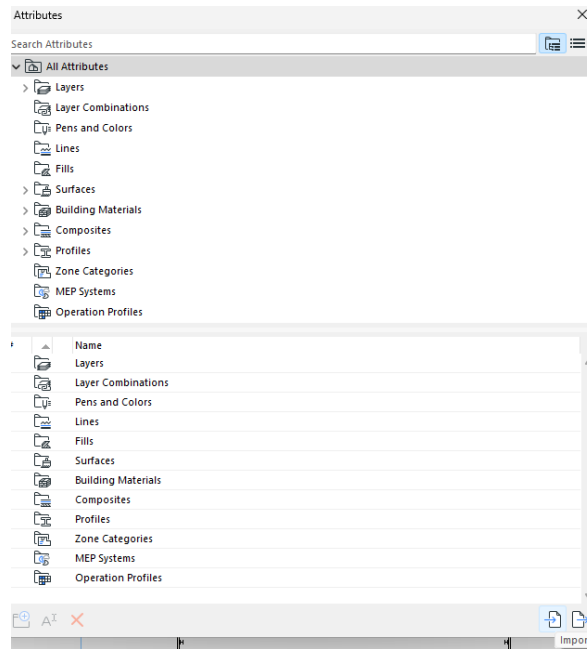


## Bondor Metecno Attributes.xml

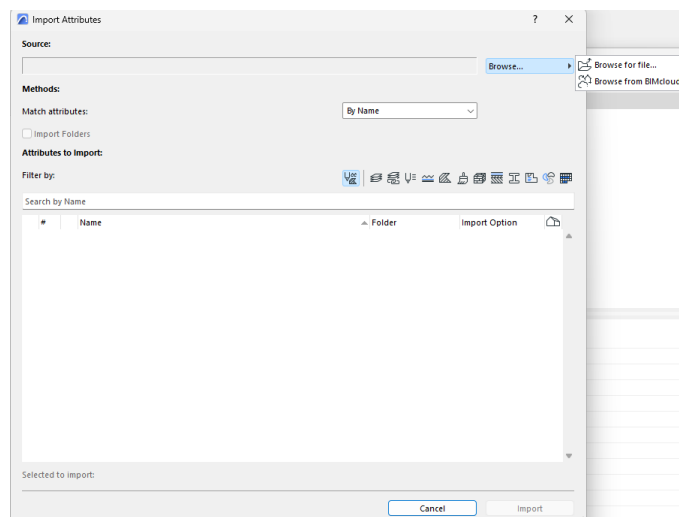
- To import the Bondor Metecno Attributes you need to click on the Options Menu>Element Attributes>Attributes



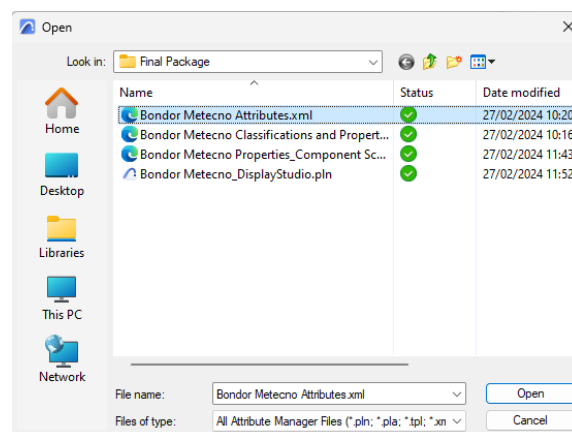
2. In the Attributes dialogue box click on the import button in the bottom right corner.



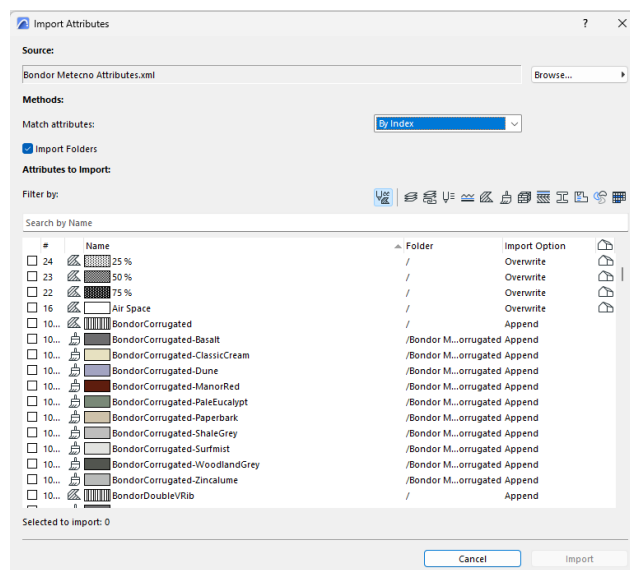
3. In the Import Attributes dialogue box click on browse...>Browse for File...



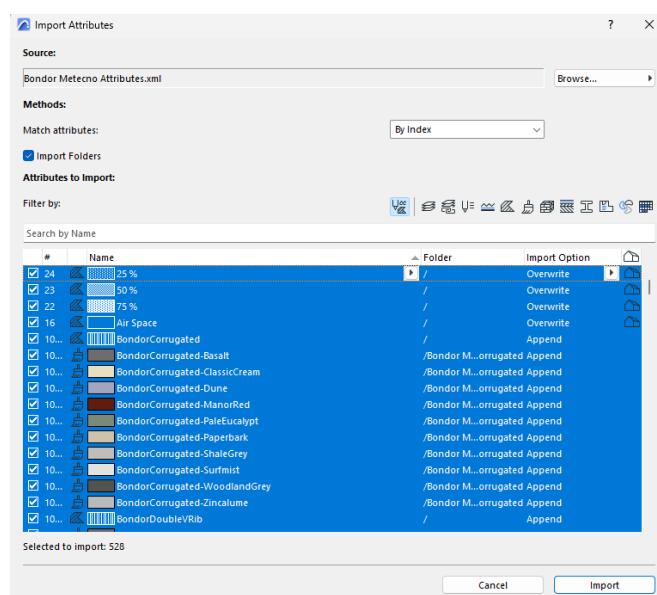
4. Select the Bondor Metecno Attributes.xml file and click on open.



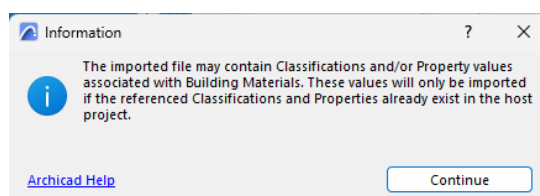
- The Import Attributes dialog box will reappear with the Bondor and some out of the box attributes. Select the Methods: Match attributes (By Index) and Check the Import Folders box.



- Left click on the top attribute in the list, then select all using ctrl+A (PC) or cmd+A (Mac) with all selected (highlighted blue) tick the checkbox on the left side to select all the attributes. Once all selected and checked with a tick, click on the Import button in the bottom right side of the dialog box.

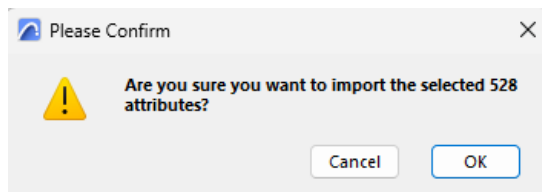


- The Information dialogue box will appear. Click on the Continue button.





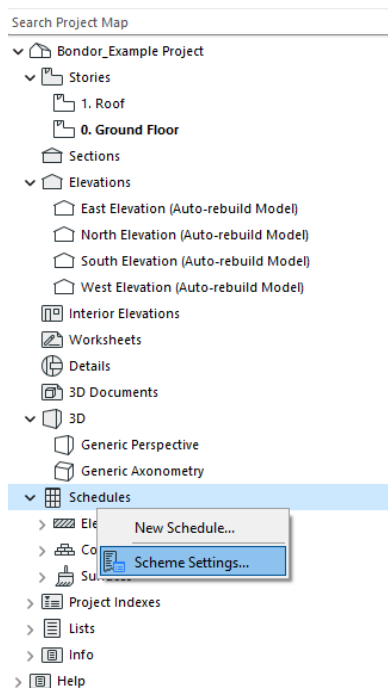
- The Please Confirm dialog box will now appear. Click on the Ok button to bring in the Bondor Metecno product range and finishes into your Archicad file.



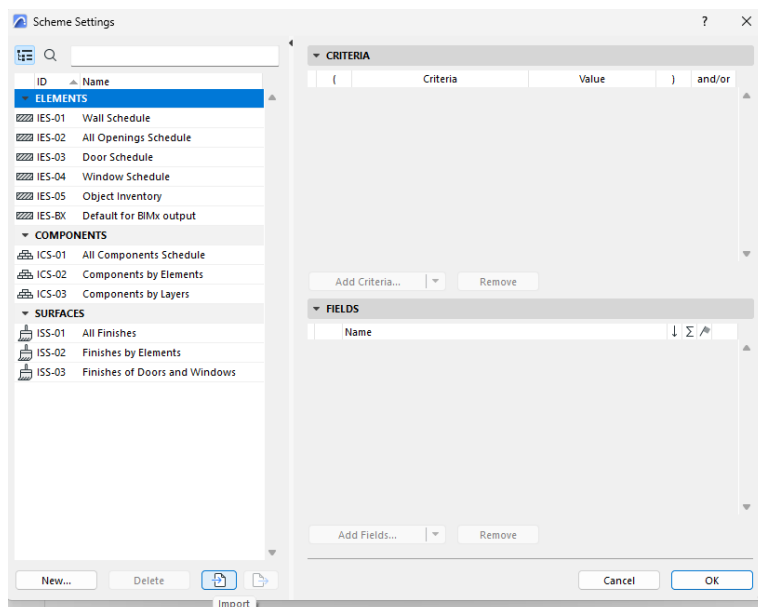
- Now you can close the Attribute dialogue box.

## Bondor Metecno Properties Component Schedule.xml

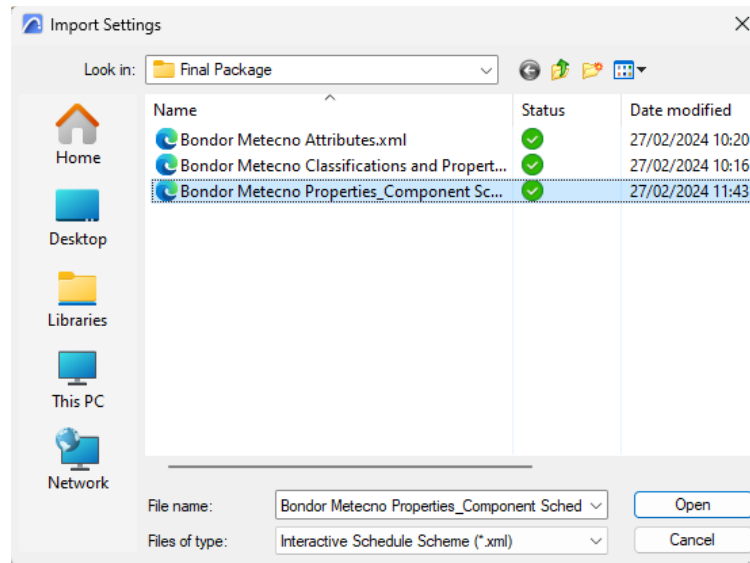
- In the Project Map right click on the Schedules and select Scheme Settings...



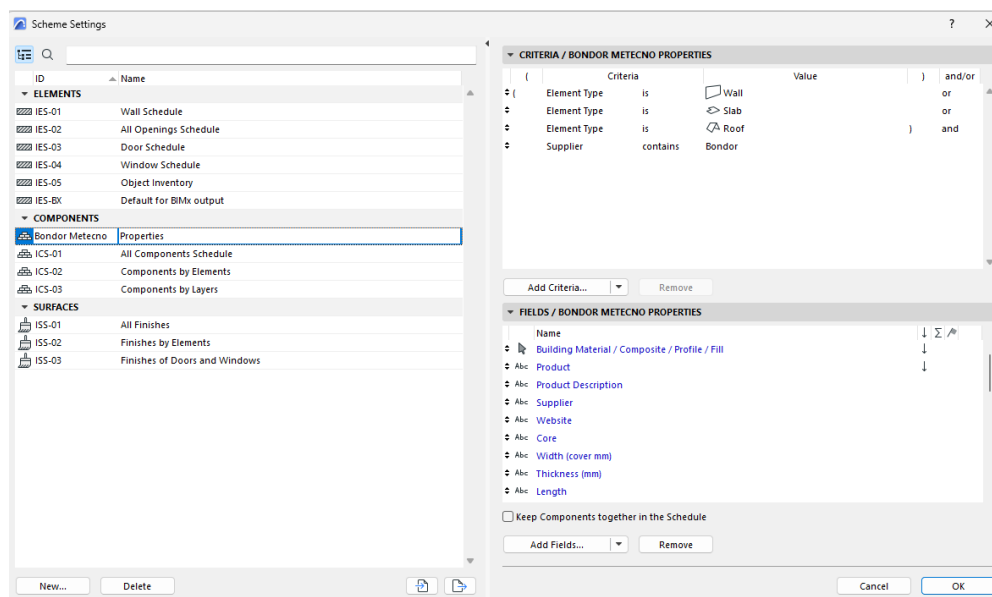
- In the Scheme Settings dialogue box click on the Import button in the bottom middle of the dialogue box.



3. In the Import Settings dialog box select the Bondor Metecno Properties Component Schedule.xml file and click Open.



4. You will be taken back to the Scheme Settings dialog box, and you will see the new Component Schedule, where you will be able to access all the Bondor Metecno product information for the products you include in your model.

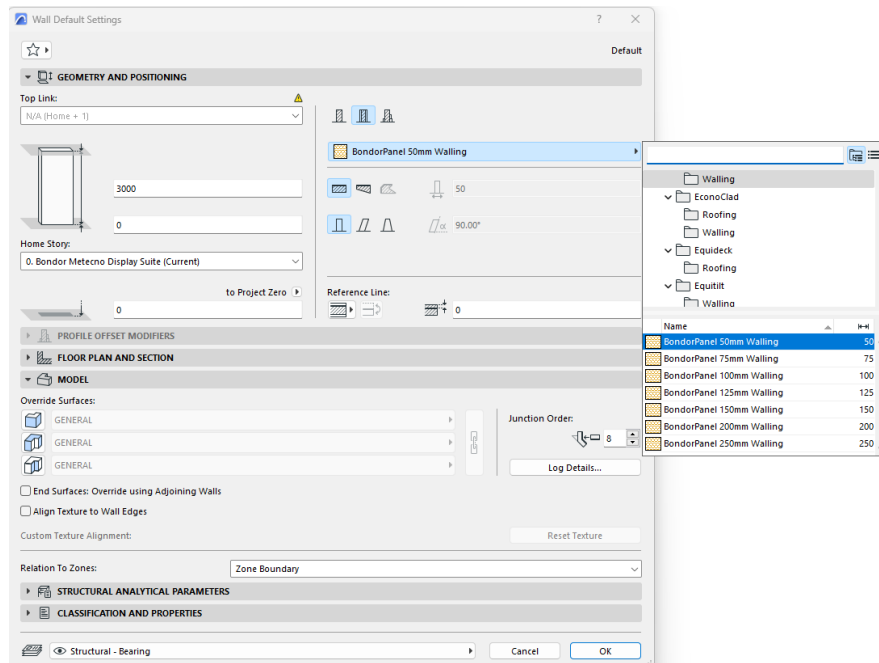


1.

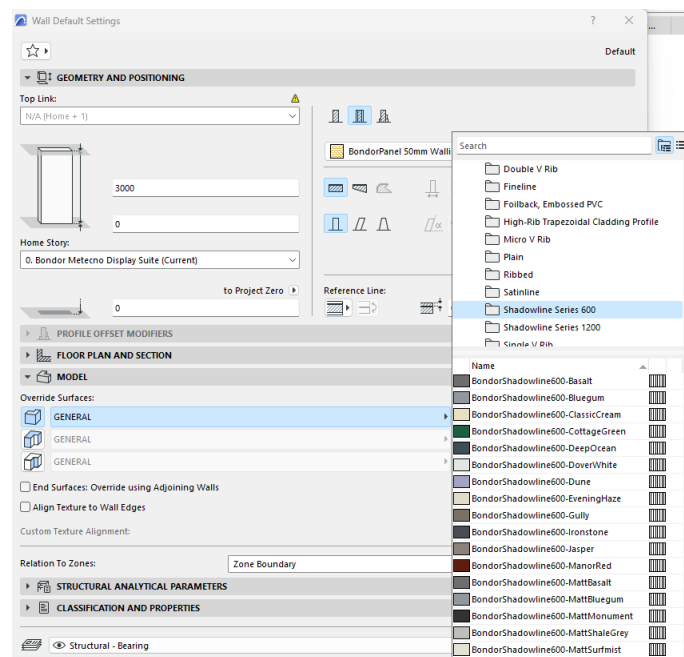
## 2. Modelling process in Archicad

The modelling process in Archicad requires a Composite to be selected, together with Surface overrides so your model includes the product type and the product finishes.

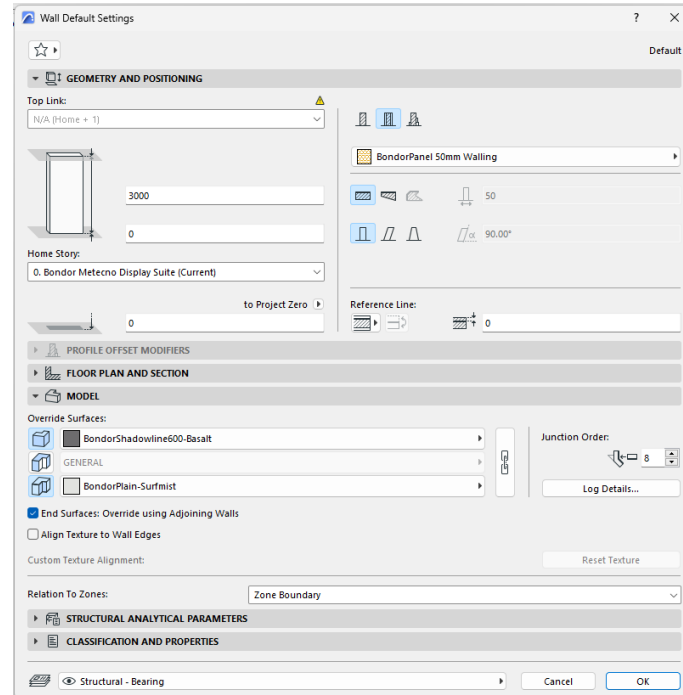
1. When you are ready to add the Bondor Metecno products into your model in Archicad, you select either the slab, wall or roof tool.
2. You then need to select the Composite construction type. You can then select the specific Bondor Metecno product from the list. Noting that each product type has its own folder, for each product type and use (walling, roofing, ceiling).



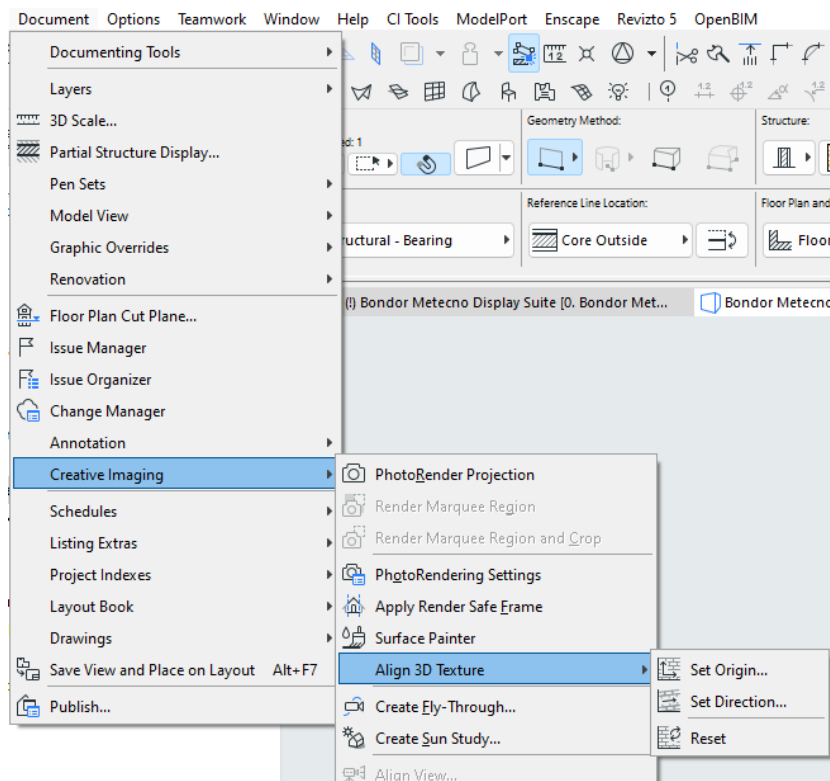
3. After you have selected the Bondor Metecno product (as a composite) then you need to override the outside/top and inside/bottom surface to represent the finishes you want for each side. Note that you need to review the Bondor Metecno specification sheet for the product you have selected to determine the finishes that are available for your modelled product.



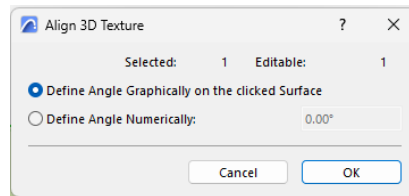
- After you have selected the finishes check the End Surfaces: Override using Adjoining Walls box.



- After selecting the specified finishes you need to ensure that the vectorial hatching representing the profile set out and orientation (horizontal/vertical/angled). In the 3D window with the element/s selected go to Document Menu>Creative Imaging>Align 3D Texture and select Set Origin. Then you need to click on the element to set out the set out point for the panel systems.



Where the vectorial hatching does not match the orientation that you want the panels to be installed, then you also will need to select the Set Direction option. Make sure you have the elements selected that you want to change the orientation of. Then select the Set Direction option. After you have selected the set direction option, click on the surface of one of the elements that you want to change the orientation. Then the following dialogue box will appear.

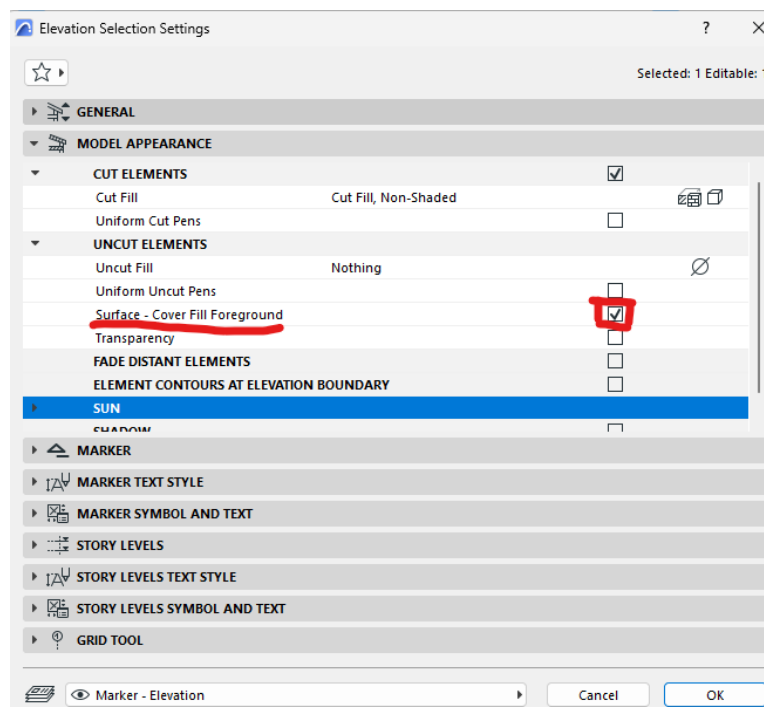


You can change the orientation using either method above depending on your specific use case.

## Additional Considerations

### Vectorial Hatching in Elevations / Sections

So that the vectorial hatching appears in your elevations and sections make sure that you check the Surface – Cover Fill Foreground selection box.



### Index Numbers

The attribute index numbers for the Bondor Metecno product content has purposely been started at index number 10,500 to avoid conflict with most Archicad users templates. If your template is using the attribute numbers that the Bondor Metecno products are using, use the import by Name methodology.

### Pens

The Bondor Metecno product content has been created using the Archicad INT pen sets which may not align with your own template if you have created your own custom pen sets in Archicad. If this is the case bulk changing of the cut fill foreground and background pens can be completed by selecting all the Bondor Metecno Building Materials in the Building Materials dialogue box and changing the pens.

To change the pens of the composites you will need to individually change them for each composite.

### Modelling using Composites not Building Materials

To remove the risk of models being created with incorrect thicknesses that do not match the specific product Bondor Metecno products should only be modelled using the Composites. A simple Building Material element should not be used.

By using the Composite methodology, it locks the thickness of the element to match the product, and it also enables the correct product specification information to be scheduled and reviewed in the project.